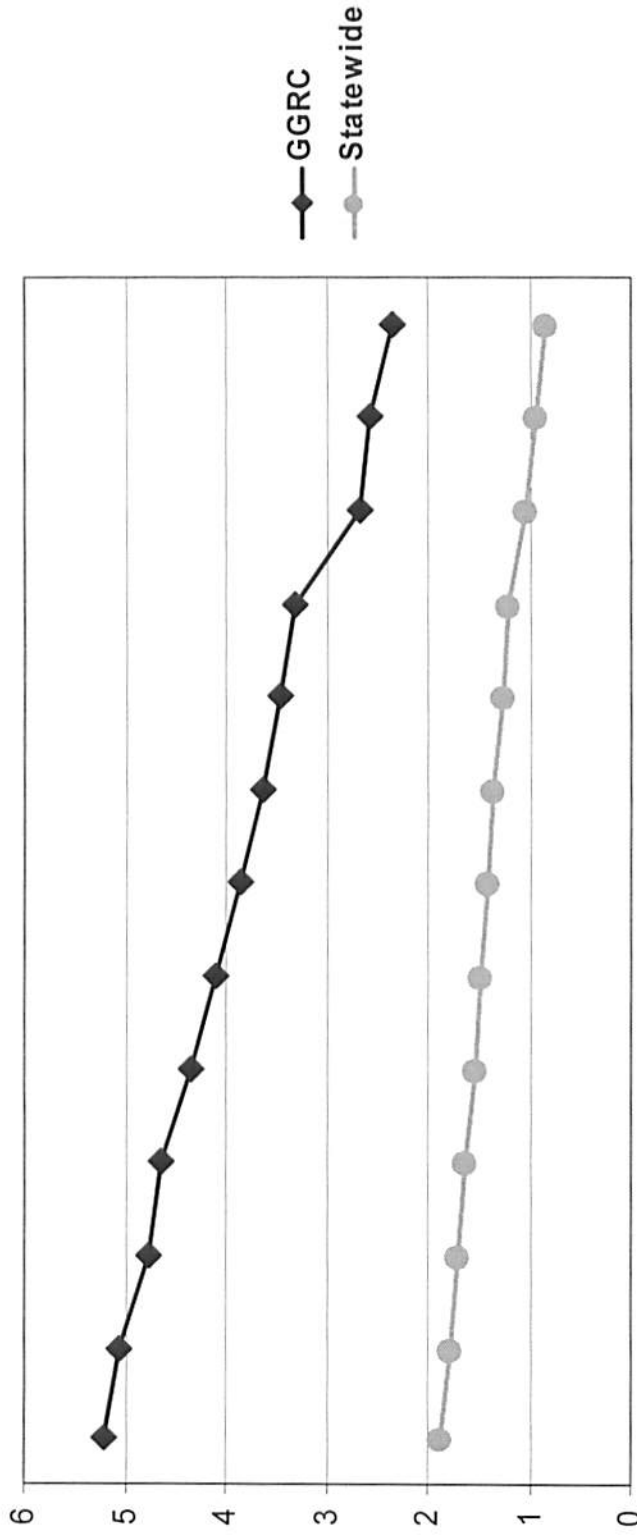


# Deinstitutionalization

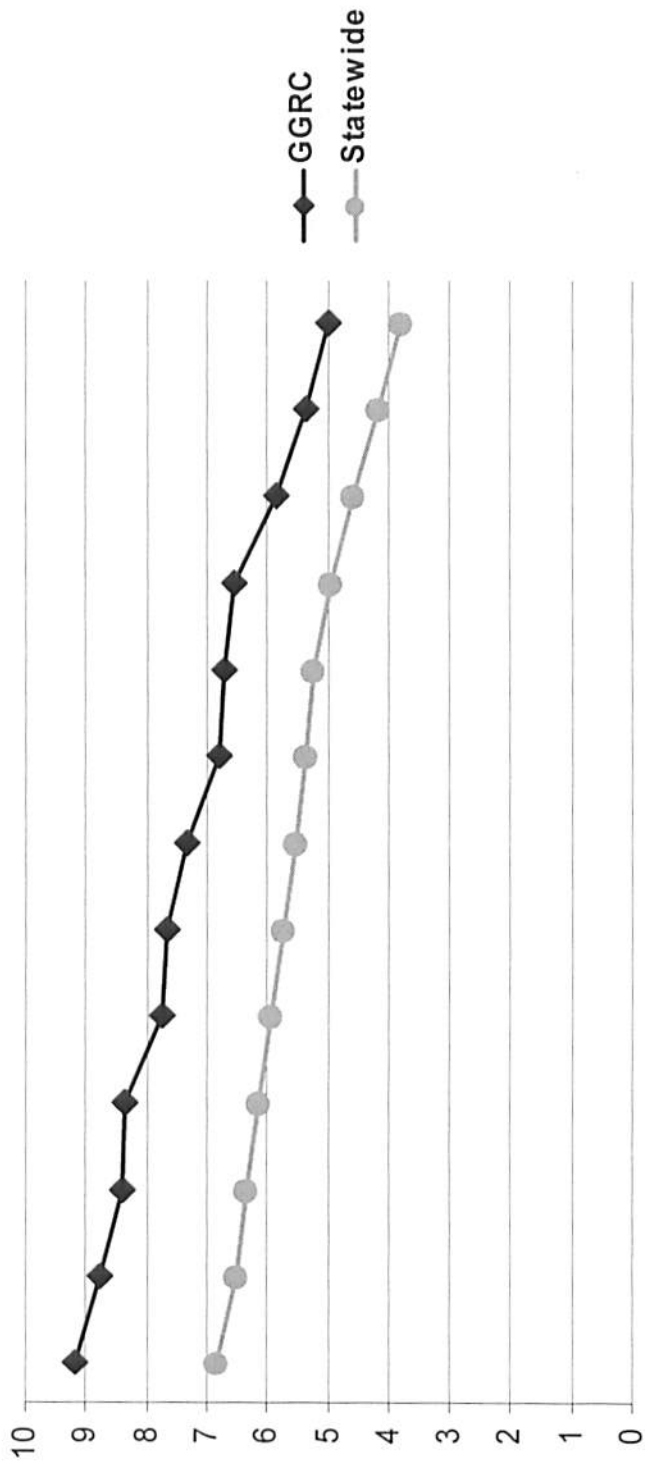
% Adults Living in Developmental Centers



June '03 through December '10

# Deinstitutionalization

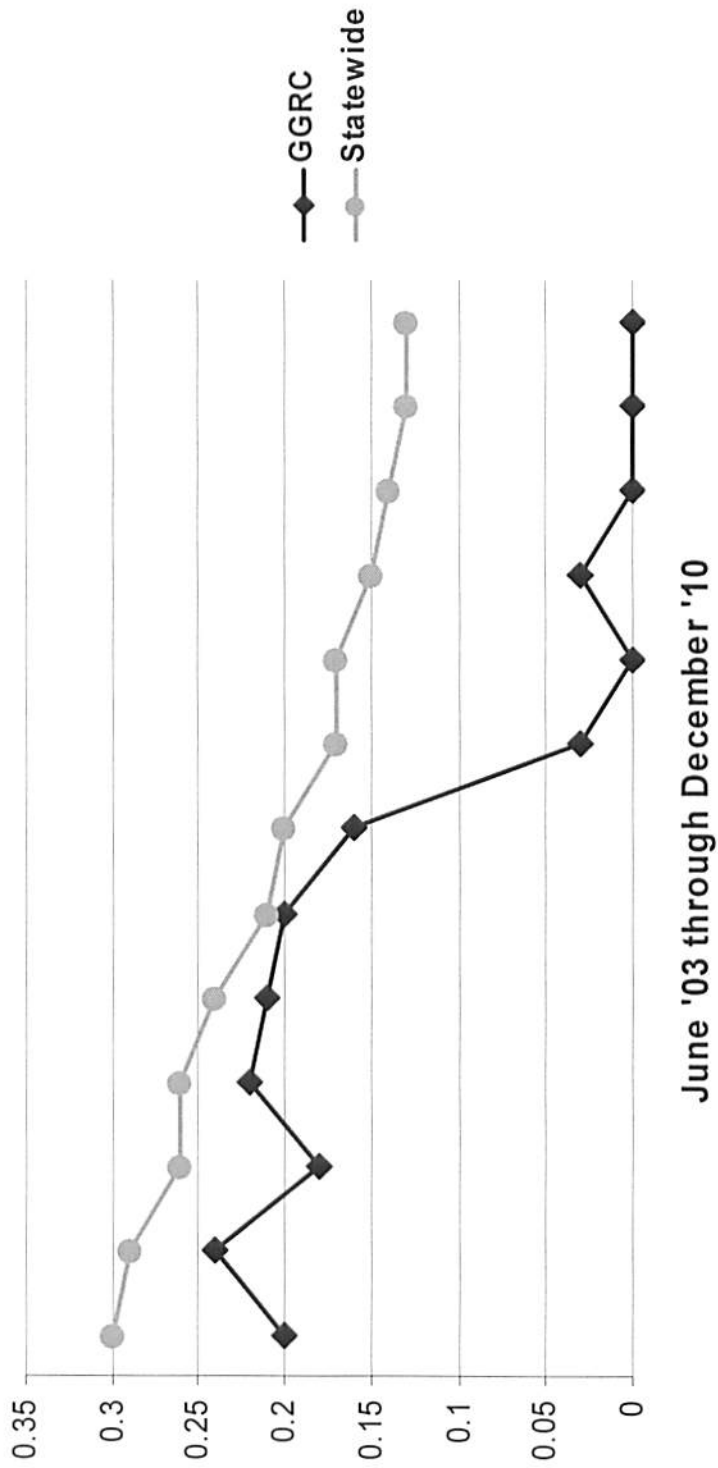
% Adults Living in 7+ Bed Facilities



June '03 through December '10

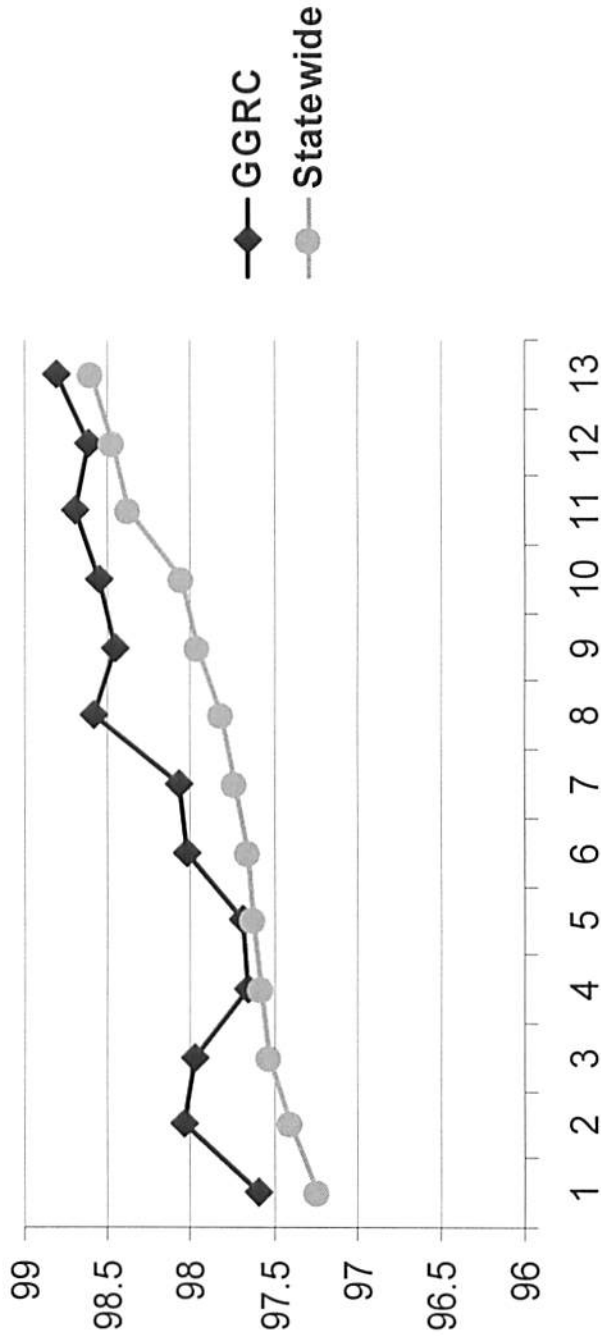
# Deinstitutionalization

% Children Living in 7+ Bed Facilities



# Community Inclusion

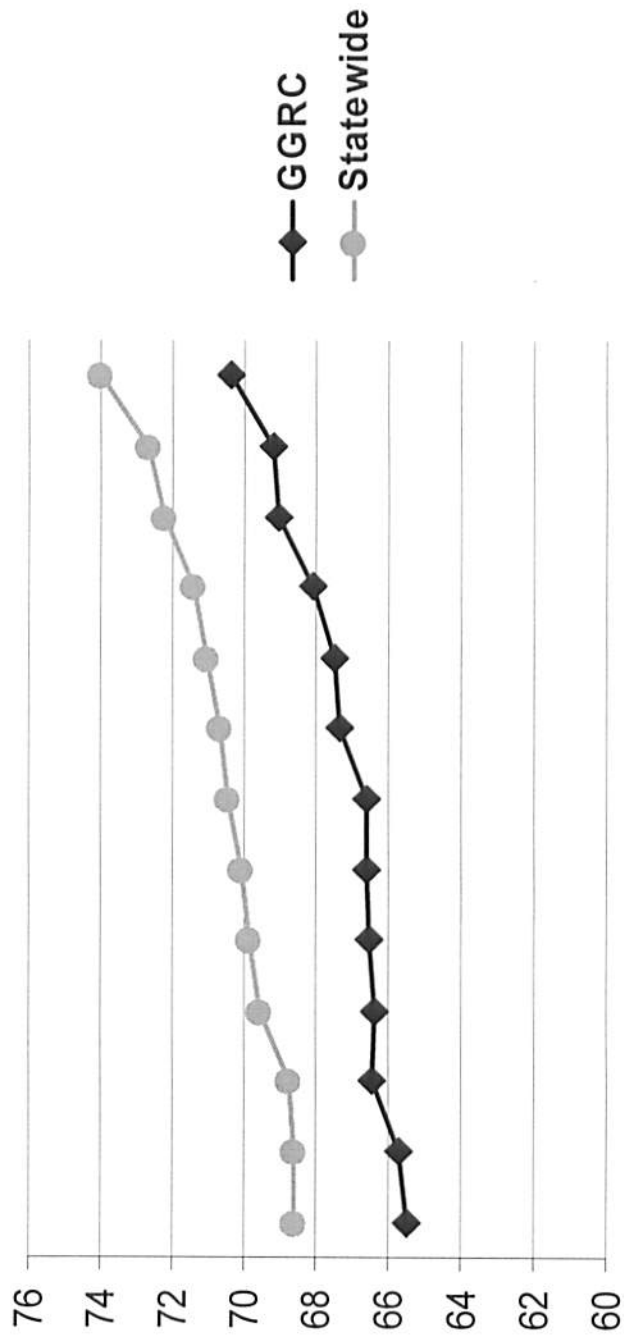
% Children Living with Families



June '03 through December '10

# Community Inclusion

% Adults Living in Home Settings



June '03 through December '10