



# Golden Gate Regional Center

Supporting people with developmental disabilities since 1966

## Early Start Program (ESP)

A Pathway for Healthcare Professionals to Access Regional Center and/or Local Education Agency (LEA)

Any child less than 3 yrs. old

Perform **Developmental Surveillance And Developmental Screening**

### Developmental Surveillance and Screening results?

#### Developmental Surveillance:

- History (Hx) including milestones and functioning
- Family History (FH)
- Social History (SH)
- Physical and neurological exam (PE)

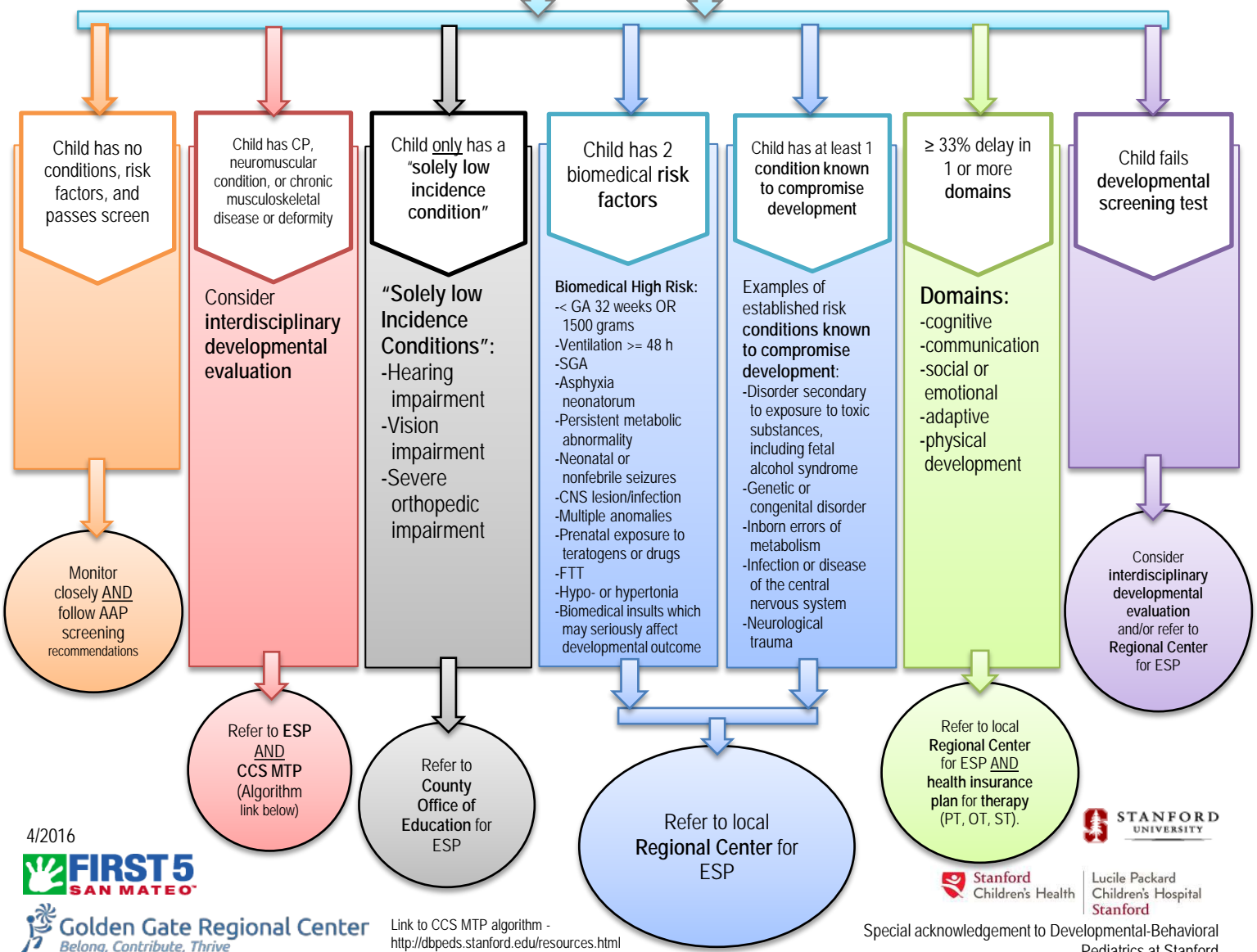
#### Developmental Screening Test

- Such as ASQ, PEDS, Denver II, BINS; at least at ages 9, 18, 24 and 30 months

### Contact GGRC at:

Intake: (888) 339-3305  
 Intake Fax: (888) 339-3306  
 Email: intake@ggrc.org  
 Main # (SF): (415) 546-9222  
 San Mateo: (650) 574-9232  
 Marin: (415) 446-3000  
 Website Link to Referrals:  
<http://www.ggrc.org/services/applying-for-services>

(Intake processing may take 1 to 4 weeks)



4/2016



Lucile Packard  
 Children's Hospital  
 Stanford